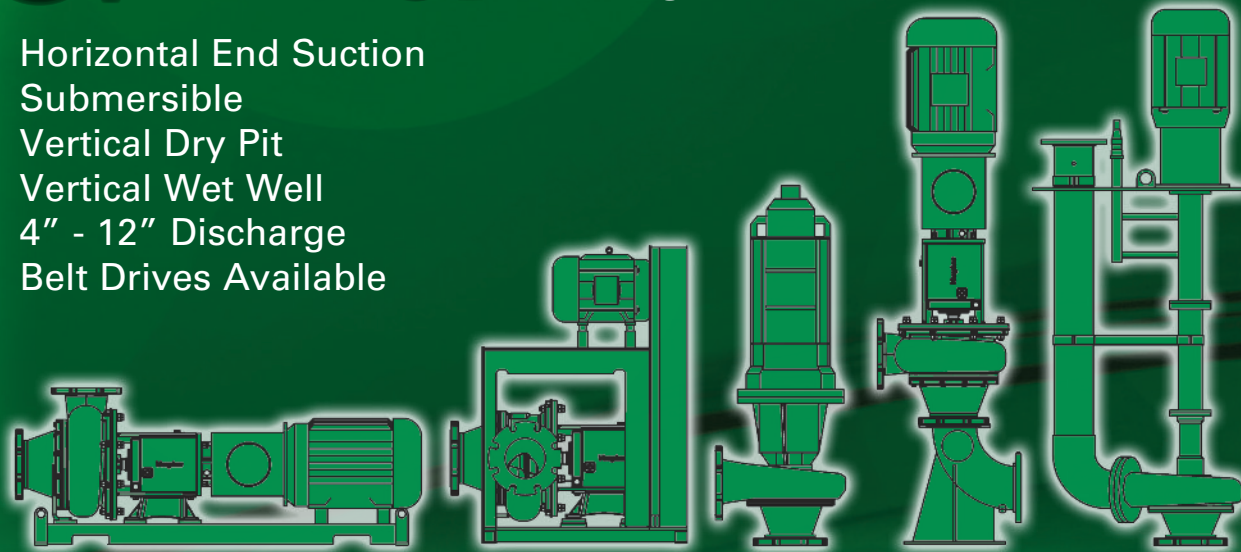


Triton® configurations

- Horizontal End Suction
- Submersible
- Vertical Dry Pit
- Vertical Wet Well
- 4" - 12" Discharge
- Belt Drives Available



Screw Centrifugal Pumps

Chopper Pumps

Wet Wells, Dry Wells, Submersibles, Self-Primers, Recirculators

Mixing Technologies

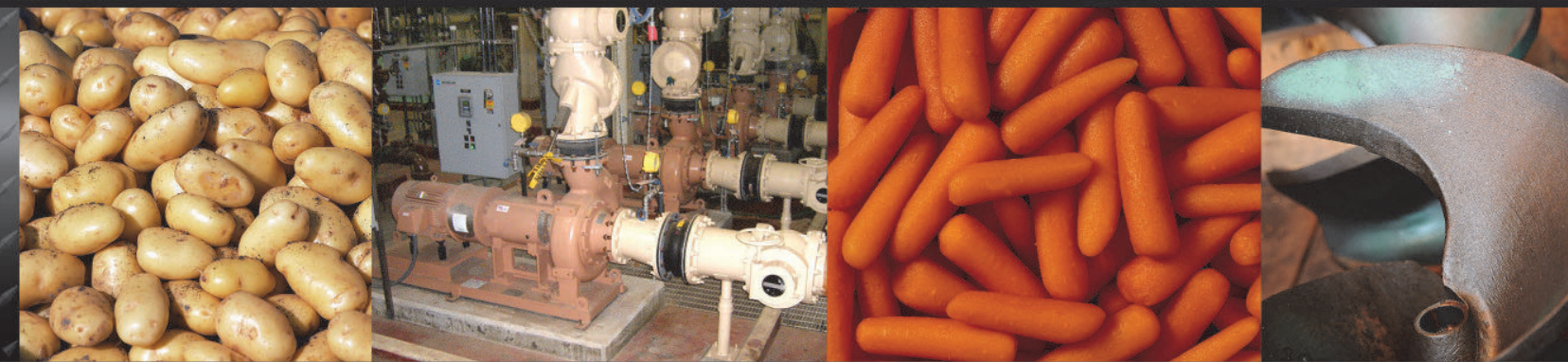
Rotamix® Mechanical Mixing, Scumbuster®, Propeller Mixers, Recirculators

Also Available

Floating Pumps, Lagoon Pumps, Auger Choppers, Vortex Choppers, Veggie Choppers



AUTHORIZED REPRESENTATIVES LOCATED WORLDWIDE



VAUGHAN CO., INC.

364 Monte Elma Road, Montesano, WA 98563

Phone: 1-360-249-4042 | Fax: 1-360-249-6155

Toll Free Phone (US only): 1-888-249-CHOP (2467)

Web Site: www.chopperpumps.com | www.rotamix.com

Company E-mail: info@chopperpumps.com

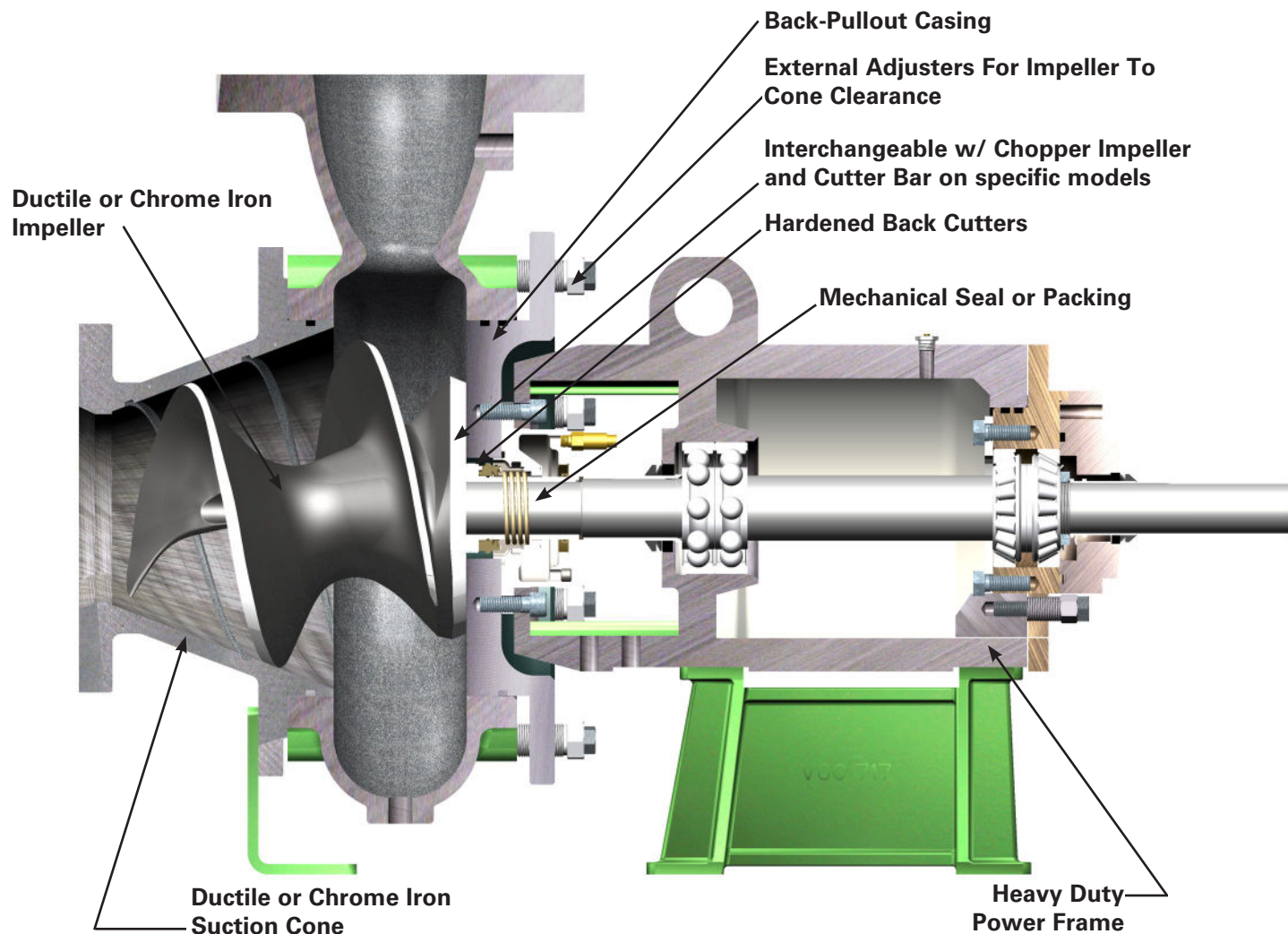
MADE IN THE
USA



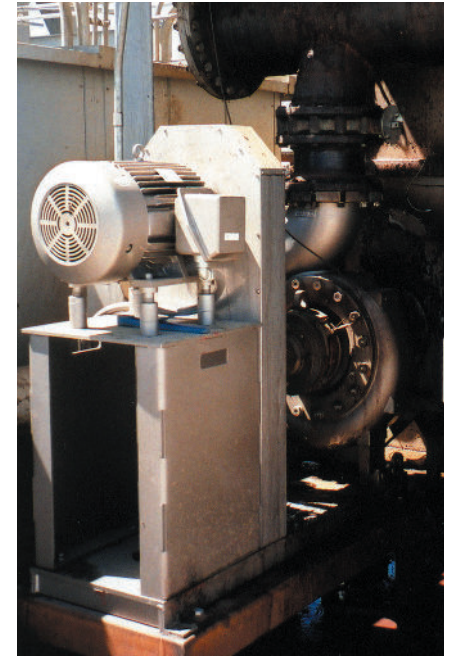
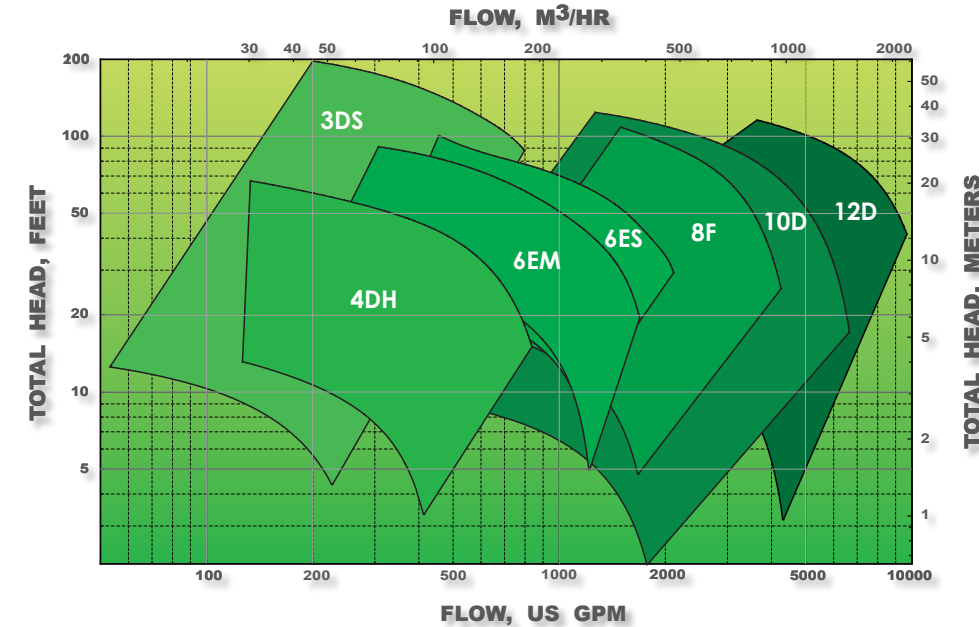
For all current patents, please see <http://www.chopperpumps.com/patents.htm>

The Triton Screw Centrifugal Pump combines the benefits of Vaughan's UNMATCHED RELIABILITY with the advantages of highly efficient, non-clog performance. Triton's screw centrifugal impeller is ideal for handling thick sludges, large or stringy solids, shear sensitive fluids and delicate or highly abrasive materials.

Unique features include steep performance curves, non-overloading power characteristics, heavy-duty power frames, patent pending back cutter system, and the flushless mechanical seal design to eliminate water flush requirements. Water flushed mechanical seal or packing also available.



PERFORMANCE COVERAGE



APPLICATIONS

MUNICIPAL WASTEWATER

- Collection Systems
- Plant Influent
- RAS & WAS
- Sludge Transfer
- Thickened Sludge
- Aerated Sludge

FOOD PROCESSING

- Fruit
- Vegetables
- Wine
- Flume Water
- Wash Water
- Waste
- Evaporators

INDUSTRIAL

- Paper Stock
- Separators
- Sludges
- Chemical Slurries
- Resins
- Carbon Handling
- Oil Field Salt Water Treatment



FEATURES & BENEFITS

- High Efficiency - Energy Savings
- Low Shear - Gentler Pumping Action
- Low NPSH - Minimizes Suction Requirements
- Back-Pullout Casing - For Ease of Maintenance
- Mechanical Seal or Packing - Allows Full Flexibility
- Back Cutter - Protects Mechanical Seal
- Optional Materials - For Corrosion and Abrasion Resistance
- Proven Severe Duty Mechanical Seals - Most Dependable Sealing System Available